

Safety
&
Instruction
Manual

7th Edition

For Your

Single Action Firearms



U.S. FIRE ARMS MFG. CO.

HARTFORD, CT



Founded in the historic East Armory, a part of the original Colt Firearms facility, U.S. Fire Arms Mfg. Co. is based in Hartford, CT. All firearms are designed by U.S. Fire Arms to be historically accurate, hand-assembled recreations that reflect the craftsmanship and quality of the firearms once made in that facility.

For more information about U.S. Fire Arms, the selection of firearms and a nationwide dealer listing, call toll-free 1-877-227-6901, or visit our website, www.usfirearms.com.

Contents

4-7

Safety Instructions
Special Notices

8-9

Safe gun handling is your responsibility
When handling your firearm
Before firing your firearm

10-11

When shooting a firearm
Handling Ammunition

12-13

Safe Loading Procedure
Safe Loading Instructions

14-15

Material for Shooting
Your Weapon is now Loaded

16-17

Model 1873 Single Action Center Fire Revolver
Exploded view

18-20

Shooting Your Single Action Firearm
Safe Unloading Procedure
Cleaning and Storage

21-22

Dis-assemble revolver
Re-assemble revolver

22-27

Special Warnings and Cautions
Cautions you should follow

28-29

Factory Service
Warranty Statement

30

Special Services & Guns to Order

Inside back cover

The Old Armory Custom Shop

Be A Safe Shooter! Keep Out of Reach of Children!

Remember, children can and will find your firearms. Store them unloaded, with a gunlock in the trigger guard, in a locked gun safe. Federal Firearms Regulations define safe storage as a safe, gun safe, gun case, lock box, or other device designed to be used to store a firearm and that can be unlocked only by means of a key, a combination, or other similar means.

As a firearms owner and user, you must take responsibility for the safe handling and safe storage of your firearms.

Safety Instructions

Notice of Personal Responsibility

This Manual of Instruction and Safety gives advice on the safe handling of this gun from U.S. Fire Arms. However, your safety and that of your family and others depends on your mature compliance with these instructions and advice. You must adopt and develop these practices and only you can employ them in the safe handling of this or any firearm. These firearms, although simple in design, are complex and require your full attention to detail. Follow the recommended loading instructions contained in this Manual.

Every year many children are injured while playing with a fire arm. Please do not mishandle this firearm and create another needless accident. Secure your firearm!

Notice of Liability *(Please Note)*

U. S.Fire Arms Mfg. Co. shall not be responsible, either in whole or part, for injury, death, or damage to property resulting from intentional or accidental discharge of this firearm, or from its function when used for purposes or subjected to treatment for which it was not designed.

U.S.Fire Arms Mfg. Co. will not honor claims involving our firearms which result from careless or improper handling, unauthorized adjustment, re-manufacture, corrosion, neglect, or the use of wrong ammunition, bullets, or any combination of the above. We will not honor claims involving these firearms for any reason or cause when such claims are made by a second or subsequent owner.

Notice of Status as Fire Arm

This Single Action Revolving Pistol, was manufactured in exact historic detail. Because of the accuracy of design, and use of modern ammunition, this firearm has been judged to qualify as a Firearm by the Bureau of Alcohol, Tobacco and Firearms.

It may interest you to know that a Tax of 10% of the cost of your gun was collected by the BATF for the guns' manufacture. Manufacture of firearms is expensive and a not altogether expanding industry. Please know that we, here at U.S. Fire Arms, are doing our best to provide you with a pleasant experience and at affordable cost.

We must remind you that this Authentic Single Action is a firearm and can kill you, a family member, and or cause property damage if it is misused. This is a real gun and should be treated safely as any modern firearm of today.

This instruction manual should always accompany this revolver and should be transferred with it upon change of ownership. If you require a replacement instruction manual, write to:

United States Fire Arms Manufacturing Co., Inc.

445-453 Ledyard Street

Hartford, CT U.S.A. 06114

1-860-296-7441

The replacement instruction manual will be shipped for free.

Notice of Factory Proof

The small inspectors marks and serial numbers found on almost any gun of today, including these Single Action Revolvers, are used to provide information about your gun or gun part. It tells U. S. Fire Arms what exacting standard of manufacture that part was subjected. Please do not remove or alter any serial number or Mark of Proof. Please do not remove, alter, or re-manufacture any part, spring, or metal bearing surface in any way. A 'tuned' gun, or, addition of high performance parts not standard to our firearm will bring it **OUT OF PROOF** and out of its normal operating range.

Removal or defacement of marks is considered bringing the firearm Out of Proof. A firearm found to be **OUT OF PROOF**, whether done by the owner, or on behalf of the owner, will be brought either back into proof by the factory or will be destroyed and a replacement made available at reasonable cost to the owner of the de-commissioned firearm.

Safe gun handling is your responsibility

United States Fire Arms creates historically accurate firearms based upon original 19th Century designs. Your single action firearm is handcrafted to the highest quality standards and is intentionally designed to function exactly like the original Colt SAA with all it's faults. The only safety feature that has been incorporated into the gun is the original 1st notch safety. However, mechanical safety features are no substitute for intelligent use.

A firearm is capable of injuring or killing another person or animal and damaging property. Make safety a habit. Do not indulge in thoughtless acts that may lead to injury or death. Insure the safe use of your firearm by following these guidelines.

WARNING

Use your firearm only in accordance with the instructions in this manual. This gun has the original safety system.

Make Safety A Habit.

Your single action firearm has a solid firing pin. Always keep the hammer down on an empty chamber for safety.

When handling your firearm:

- *Read and understand the contents of this manual.*
- *Handle all firearms as if they were loaded.*
- *Check the firearm for live ammunition when picking it up, passing it to or receiving it from another person, and before storing it.*
- *Fully understand the operation of your firearm before loading and firing it.*

Before firing your firearm:

- *When loading your firearm, load only five (5) cartridges in the cylinder. Always keep the hammer down on an empty chamber. (See loading instructions on Page #12.)*
- *When loading your firearm, hold it in your left hand, draw the hammer to a half-cocked position (See Fig. #3, Page 13) with your right hand and open the gate.*
- *Always have your firearm pointed in a safe direction. If you must carry a loaded firearm, always carry it with the barrel pointing towards the ground with the hammer down on an empty chamber. **DO NOT** carry a firearm with the hammer cocked.*

When shooting a firearm:

- *When shooting any firearm, wear safety glasses to protect your eyes from fragments and powder. Wear ear protection against the loud noise of firing.*
- ***DO NOT*** *put your finger inside the trigger guard until you are ready to fire.*
- *When shooting any firearm, be sure the area has a safe, impenetrable backstop. On a target range, always follow the range officer's commands to load, fire, cease-fire and unload.*
- *Use ammunition specifically recommended for your firearm. The appropriate ammunition is specified by the caliber of your firearm and is permanently engraved on the barrel of your firearm.*
- *Use only commercially manufactured ammunition.*
- ***NEVER*** *mix ammunition of different calibers.*
- *If your firearm fails to fire, ***DO NOT*** try to fire it and ***DO NOT*** try to force the hammer down. Keep your firearm pointed at the target and wait 30 seconds. If the firearm does not fire within 30 seconds, point the barrel in a safe direction and carefully unload the firearm with your fingers outside the trigger guard.*

- *When transporting your firearm, be sure that it is unloaded. Transport your unloaded firearm and ammunition in separate, secure, locked containers. As an added safety measure, install a gunlock in the trigger guard of your firearm when it is being transported.*
- ***DO NOT store your firearm in cloth, leather or paper wrapping. These will attract and hold moisture which will cause corrosion and may result in malfunction. As an added safety measure, store your firearm with a gun lock in the trigger guard. Store your firearm and ammunition securely out of the reach of children.***

Handling Ammunition

Your firearm was designed for a specific type of ammunition (cartridge), referred to as caliber. The caliber of your firearm is clearly marked on the barrel. **DO NOT** use any other ammunition than that specified on the barrel of your firearm. **ALWAYS** use new, commercially manufactured ammunition. **NEVER** mix ammunition of different calibers. Always handle ammunition with care. **DO NOT** drop cartridges or subject them to shock, impact or heat. The cartridge may explode and cause injury or death.

Safe Loading Procedure

If you are certain that you have the specific type of ammunition for your firearm, you may begin the safe loading procedure.

- *Pick up the firearm with your left hand and point the barrel downward. **ALWAYS** keep your fingers away from the trigger guard and trigger when loading a firearm.*
- *Use your thumb to move the hammer into the 2nd Position - Loading Notch. (Fig. 3, Page 13).*
- *Open the gate with your right hand.*
- *Insert the cartridges into the cylinder chambers with your right hand and close the gate securely. **DO NOT** load more than five cartridges into the cylinder.*
- *Spin the cylinder around to an empty chamber.*
- *Keep the firearm pointed downward and draw the hammer back to index the cylinder.*
- *Keep your thumb on the hammer and slowly squeeze the trigger and allow the hammer to move forward until it rests on the empty chamber.*
- *Move the hammer to the 1st Position - Safety Notch. (Fig. 2, Page 13).*

Safe Loading Instructions

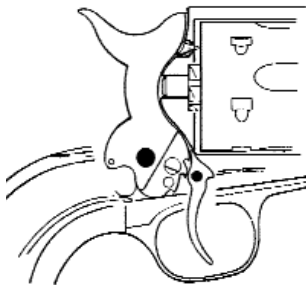


Fig. 1 - Rest Position

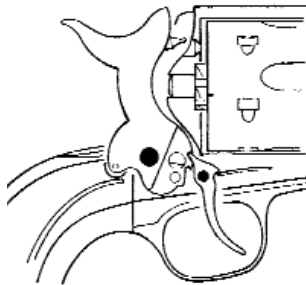


Fig. 2 - 1st Position
Safety Notch

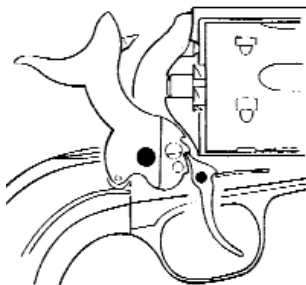


Fig. 3 - 2nd Position
Loading Notch

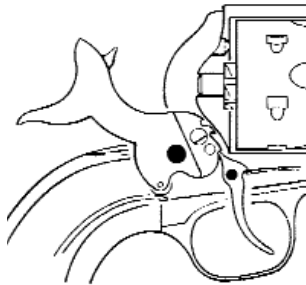


Fig. 4 - 3rd Position
Cock Notch

The illustrations above show the three cocking positions of the hammer on your firearm. First, memorize each of these positions. Second, before attempting to load your firearm, practice moving the hammer from the 1st Position to the 2nd Position, then 2nd Position to 3rd and, finally, 3rd Position to Rest. Remember to handle all firearms as if they were loaded. **ALWAYS** keep the firearm pointed in a safe direction.

Material for Shooting

Factory, New, Commercially Manufactured Ammunition in New Condition

The ammunition to be used in these revolvers is strictly to be Factory new ammunition and not re-loaded or old outdated ammunition.

The Caliber of your Single Action is listed on the left side of the barrel near the frame. This designation is the only* type of ammunition to be used in your revolver.

Please follow ammunition manufacturers guidelines for the safe storage, disposal, and care of your ammunition. Only high quality new ammunition should be used in this fire arm. Use of wrong, old, or re-loaded ammunition can bring your firearm **OUT OF PROOF**.

*(*The exceptions are revolvers with dual chambering allowing the use of different ammunition when using a different cylinder).*

Dual chambering is available for the following USFA pistols:

45 Colt - 45 ACP (Automatic Colt Pistol .45)

44 Special - 44 WCF

38 WCF - 41 Colt

32 WCF - 32 H&R Magnum

22 L.R. - 22 Magnum

Your Weapon is now Loaded

Use Common Sense and Basic Fire-Arms Safety

If you are not going to fire immediately, spin cylinder around to index it for the empty chamber. Draw hammer back to index cylinder and then carefully squeeze trigger and allow hammer to move forward, controlled by your thumb, until it rests on the empty chamber. Then engage the safety notch (first position).

REMEMBER: This is a Traditional Arm and although it has a ‘Safety’ position for the hammer we strongly recommend that you not carry any loaded firearm. That if you choose to carry a firearm you do so with the hammer down on an Empty Chamber; and that you be aware, responsible, and ready to accept the consequences of your actions.

Model 1873 Single Action Center Fire Revolver

Exploded view

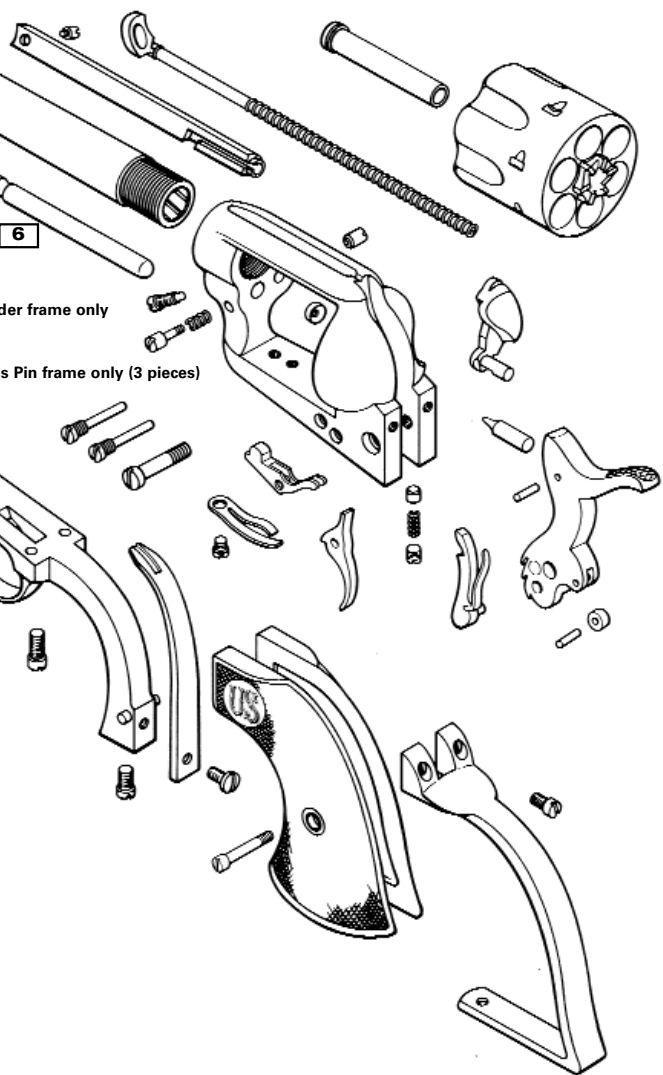
- 1** Barrel
- 2** Ejector Rod Housing
- 3** Ejector Rod & Spring
- 4** Cylinder Bushing
- 5** Cylinder
- 6** Base Pin
- 7** Frame
- 8** Gate
- 9** Bolt
- 10** Bolt & Trigger Spring

- 11** Firing Pin & Pin
- 12** Hammer
- 13** Trigger Guard
- 14** Main Spring
- 15** Trigger
- 16** Hand & Hand Spring
- 17** Roller & Pin
- 18** Grips
- 19** Backstrap

- A** Ejector housing Screw
- B** Black Powder Screw
- C** Cross Pin Screw Nut & Spring
- D** Recoil Plate
- E** Bolt Screw
- F** Trigger Screw
- G** Hammer Screw
- H** Trigger Guard Screw (2)

- I** Bolt & Trigger Spring Screw
- J** Gate Plunger
- K** Gate Spring
- L** Gate Screw
- M** Backstrap Screw (4)
- N** Main Spring Screw
- O** Grip Screw





Shooting Your Single Action Firearm

Before shooting your single action firearm, be sure the target area is clear of all obstacles and that no one is in your line of fire.

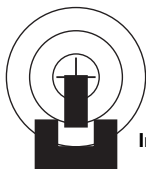
ALWAYS wear safety glasses. An exploding cartridge will spray particles that may cause damage to your eyes or blindness.

ALWAYS wear specially designed ear protection. The noise from your firearm may lead to temporary or even permanent hearing loss.

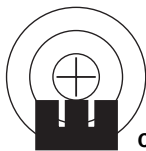
When shooting, hold the firearm by the grip and **ALWAYS** keep both hands away from the cylinder. Hot gas and particles of lead and powder are sprayed out and around the cylinder that will burn your hands.

ALWAYS keep your firearm pointed in a safe direction until you are ready to shoot. Then, follow this four-step procedure.

1. Aim, by aligning the target with the front and rear sights.



Incorrect



Correct

- 2.** Move the hammer to the 3rd Position - Cock Notch.
(Fig. 4, Page 13).
- 3.** Squeeze the trigger gently and evenly to fire.
- 4.** Return the hammer to the 3rd Position - Cock Notch, and repeat the steps until all the loaded chambers are discharged.

Safe Unloading Procedure

When you have finished shooting at your target, point the firearm downward in a safe direction and move the hammer into the 1st Position - Safety Notch, before unloading. Then, follow this three step unloading procedure.

- *Hold the firearm in your left hand and move the hammer to the 2nd Position - Loading Notch. (Fig. 3, Page 13).*
- *Open the gate with your right hand.*
- *Use the ejector to eject the empty cartridges one at a time moving the cylinder with the thumb and forefinger of your left hand. When all the empty cartridges have been ejected, your firearm is ready for re-loading.*

Cleaning and Storage

Although smokeless powder is not highly corrosive, it is important to clean your firearm immediately after use and periodically when it is stored for a long period of time.

ALWAYS make sure your firearm is unloaded before attempting to clean it. A cleaning tool has been provided for your convenience to remove lead and powder from the barrel. All metal parts of your firearm should be kept well lubricated with good quality gun oil. A soft, absorbent cloth should be used to remove excess oil and to maintain the finish of the metal.

When not in use, **ALWAYS** store firearms and ammunition separately in a locked, secure environment securely out of the reach of children. As an added safety measure, install a gunlock in the trigger guard of your firearm before storing it.

DO NOT store your firearm in an airtight container.

DO NOT seal the barrel or cylinder chambers to block out dust. This will cause moisture to accumulate in the barrel and chambers that will lead to corrosion of the metal surfaces.

ALWAYS store ammunition in a separate, locked container.

Dis-assemble Revolver

Half-cock the pistol, loosen the catch screw which holds the center-pin, draw out the center pin, open the gate, and the cylinder can then be withdrawn.

To remove the Ejector, turn out the ejector tube screw, then push the front end away from the barrel and pull it towards the muzzle. The barrel can then be unscrewed but this is not recommended and should not be attempted.

The Stock can be removed by turning out the two screws just behind the hammer and at the bottom of the strap. The trigger guard can be removed by disengaging the Mainspring and turning out the screws located near the trigger and at the front of the trigger guard. All parts of the lock are then displayed and can be readily cleaned.

To remove the Gate, turn out a screw in the lower side of the frame, {hidden by the trigger guard,} then the gate spring and catch can be withdrawn, and the gate can be pushed out.

The best quality light oil should be used for oiling the parts.

Re-assemble Revolver

RE-ASSEMBLE in reverse order and wipe all metal parts with an oil cloth to remove finger prints which may cause corrosion.

IMPORTANT: Do not strip revolver further than as described above. If additional maintenance is required see the section on Service at the Factory.

N.B. Do not attempt any alteration of the hammer, or , hammer safety, or, try to defeat the hammer safety in any way. Defeating the hammer safety of this or any firearm is Negligent behavior. And Voids any Warranty of your product.

Should you feel that your firearm is out of order please send it to the company for inspection at the address located below:

United States Fire Arms Manufacturing Co., Inc.

445-453 Ledyard Street

Hartford, CT U.S.A. 06114

1-877-227-6901

Special Warnings And Cautions!

If any gun is carelessly or improperly handled, unintentional discharge could result, and could cause injury, death, or damage to persons and or property.

Although this revolver does contain a modern safety device. Extra Care and Strict Adherence to these instructions by the gun user, and any person using the gun, is mandatory for minimizing the risk of accidents, death, or property damage to you or your family.

When you pull the trigger you must expect the gun to fire. Be A Safe Shooter! Never load or point any firearm until you are ready to fire and accept the consequences of your actions in firing the gun.

Cautions you should follow

ALWAYS handle your revolver as if it were loaded so that you never fire it accidentally when you think it is unloaded.

NEVER point your revolver at anything you do not intend to shoot so that if it fires, accidental injury, death, or damage to property will be prevented.

NEVER take anyone's word that a gun is unloaded. check for yourself keeping your fingers off the trigger and the gun

pointed in a safe direction, to see that the chambers are empty, so that you never fire the gun accidentally when you think it is unloaded.

ALWAYS be sure barrel and action are clear of obstructions. clean a fouled revolver immediately so that it will function correctly and safely.

NEVER squeeze the trigger or put your finger in the trigger guard until you are aiming at a target and ready to shoot. This will prevent you firing the revolver when it is pointing in an unsafe direction.

ALWAYS hold your revolver by the grip and keep both hands well clear of, and behind the cylinder. never hold it near cylinder as very hot gas and particles of powder and lead are sprayed out around the cylinder-these would injure your hands.

FAILURE to fire always hold revolver, keeping it pointed towards the target and wait 30 seconds when revolver fails to fire. If a hang-fire (slow ignition) has occurred, revolver should fire within 30 seconds. if revolver does not fire, remove cartridge.

DO NOT try to re-fire the defective cartridge.

NEVER fire your revolver near an animal unless it is trained to accept the noise; an animal's startled reaction could injure it or cause an accident.

NEVER walk, climb or follow a companion with your

revolver cocked ready to fire (in battery), or with the hammer in any position other than engaged in the safety-notch, down on any empty chamber. (first position.)

ALWAYS wear shooting glasses when loading and firing and keep revolver at arms length. Always be absolutely sure of your target and the area behind it before you squeeze the trigger. A bullet could travel through or past your target up to a mile ... if in doubt, don't shoot!

NEVER shoot at a hard surface, such as rock, tree, or, liquid surface, such as water. A bullet may ricochet and travel in any direction to strike you, or an object you cannot see, causing injury, death, or damage to property.

ALWAYS be sure your backstop is adequate to stop and contain bullet before beginning target practice so that you do not hit anything outside the range shooting area.

ALWAYS put someone in charge to maintain safety control when a group is firing on a range. obey his commands so that discipline is maintained to reduce the likelihood of accidents.

ALWAYS carry your revolver empty while on range until preparing to fire. Keep it pointing towards the backstop when loaded to eliminate the risk of injury, death, or damage to property.

NEVER leave a loaded revolver unattended. Someone,

especially a child, may fire it and cause injury, death, or damage to property.

NEVER use your revolver if it fails to function properly. Never force a jammed action as a cartridge may explode, causing serious injury, possible death, or severe damage to your revolver.

NEVER leave revolver cocked ready to fire as this condition is extremely dangerous, and revolver could easily be accidentally dis-charged, causing injury, death, or damage to property.

ALWAYS carry your revolver empty with the hammer down on an empty chamber & engaged in the safety- notch.

NEVER drink alcoholic beverages or take drugs before or during shooting, as your vision and judgment could be seriously impaired, making your gun handling unsafe.

ALWAYS seek a doctor's advice if you are taking medication, to be sure you are fit to shoot and handle your revolver safely

ALWAYS wear ear& eye protection when shooting.

Without ear protection, the noise from your revolver and other guns close to you could leave a "ringing" in your ears for some time after firing, and could lead to hearing loss.

Always make sure your revolver is not loaded before cleaning, storing, traveling, laying it down, or handing it to

another person, so that it cannot be fired when it is unsafe to do so.

ALWAYS store your revolver and ammunition in separate locked receptacles out of reach and sight of children, to minimize risk of revolver and ammunition being easily available for loading and firing. Follow manufacturer's recommendation for storage of ammunition.

NEVER indulge in "horseplay" while holding your revolver as it may be accidentally discharged.

ALWAYS instruct children to respect firearms. If you teach them to shoot, teach them to use the revolver properly, and always supervise your children closely.

ALWAYS stress safety so that your children will not fire the revolver when it is unsafe to do so.

NEVER "fan" your revolver as accuracy is reduced and you may hit something other than the target aimed at. (To permit fanning, the internal mechanism of a single action revolver must be altered. such an alteration would render revolver both unsafe and out of proof.)

DO NOT make or attempt to make this alteration. This voids any warranty expressed or implied on your firearm.

IMPORTANT: do not snap hammer of revolver on empty chamber. The solid firing pin may fracture and/or you could damage the firing pin hole in the frame itself.

Factory Service

IMPORTANT: If you make unauthorized adjustments, or, use unauthorized replacement parts, or in any way bring this firearm Out of Proof, U.S.Fire Arms will not assume any responsibility for the correct functioning of this revolver. Should your revolver require adjustment or repair, make sure it is **NOT** loaded and take it to the dealer who sold it, or, send it directly to the Company at the address located below:

United States Fire Arms Manufacturing Co., Inc.

445-453 Ledyard Street

Hartford, CT U.S.A. 06114

1-877-227-6901

Before shipping your revolver, here are are some important points to remember.

I. MAKE SURE THE REVOLVER IS NOT LOADED.

II. Write a letter explaining the problem and your requirements in as much detail as possible. Include the model name and serial number of your firearm together with your return address, then enclose the letter with the revolver in a well padded package.

III. Do not send presentation boxes, accessories, or explosive components. Insure the package and contents against loss or theft.

NOTE: Various Federal and State Laws and local ordinances govern the transfer and transportation of guns, so take the advice of the Dealer in your state on how to send or transport your revolver to The Old Armory.

Warranty Statement

Lifetime Warranty

What is included:

U.S.Fire Arms stands behind its products. U.S.Fire Arms products are warranted, subject to the conditions below, for as long as you, the original purchaser, own the firearm. This is a mechanical device and has a 'Life'. The life or duration depending on severity of use, climate, care, ammunition, Etc.

What is excluded from our Lifetime Warranty:

FIREARMS THAT ARE OUT OF PROOF. An Out of Proof Fire Arm is one which has been brought out of its normal operating range; caused by use of non-factory parts, use of wrong or, re-loaded ammunition, or improper ammunition, powder, neglect, corrosion, abuse, wear, alteration of mechanism, defacement of proof marks, serial numbers, or, alteration of internal or external parts, and, any other operation or alteration on the fire arm which we feel brings it Out of Proof. Be sure to retain your sales slip as proof of purchase and date when making a claim.

Special Services & Guns to Order

Historical Letter

When your Firearm was made, its unique characteristics were recorded in the U.S.Fire Arms - Old Armory Ledger.

It records specifics such as barrel length, caliber and style of finish and stocks. As well, it contains the unique serial number of your historic firearm. The Historic Letter depicts the Armory as it stands today.

The Historic Letter is available by calling or writing the Secretary of the Armory at the address on the previous page. The Historic Letter is included free of charge when you place your Old Armory Custom Shop order for a custom gun.

“The Finest Private Armory in the World.”

The Old Armory Custom Shop

The Old Armory Custom Shop signals a New Beginning for our Old Armory. The making of a Best Quality Gun begins with the selection of fine quality Stocks & Engraving.

Standard, or Special Patterns or Styles are available and you would be encouraged to consult one of our Armory Workmen. Plating of Silver, Gold, and Nickel as well as Stocks of Ivory, Pearl and selected hardwoods are just some of the many personal choices one has to make.*



**Prices are Subject to Market Rates. Gold, Silver, etc.*

The Prairie Mail Box



Order your custom gun today.



UNITED STATES FIRE ARMS MFG. CO.

445-453 LEDYARD ST • HARTFORD, CT 06114 • USA

WWW.USFIREARMS.COM

1-877-227-6901